

BLUE BIN RECYCLING

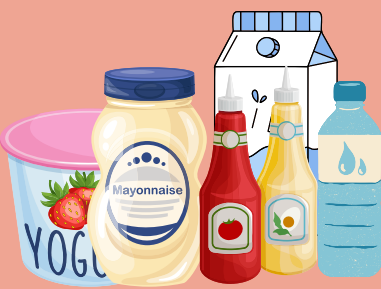


The materials you can dispose of in the blue bin require that you first ask yourself two questions.

QUESTION # 1

Does the item to be placed in the bin fall into one of the following categories?

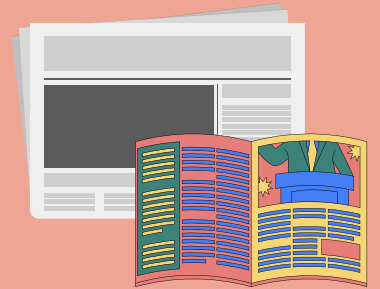
CONTAINER



PACKAGING



PRINTED



QUESTION # 2

Is the object made of any of the following materials?

METAL



PLASTIC



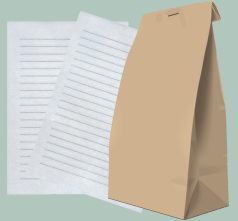
GLASS



CARDBOARD



PAPER



NO

YES

If you answered NO to any of the questions, you can be sure that the item cannot be recycled.

If you answered YES to both questions, there's a good chance the item can be put in the recycling bin. To find out, go on to the next step.

SPECIAL CRITERIA FOR PLASTICS

There are two criteria to watch out for when an object is made of plastic

CRITERIA #1

Locate the arrow symbol on the object



Then locate the number in the center of the symbol. Numbers 1, 2, 3, 4, 5 and 7 can all be recycled, while number 6 goes into the garbage, especially Styrofoam containers, which are made from this type of plastic.



CRITERIA #2

Grocery bags, plastic wrap and any packaging bag that stretches easily when the thumb is inserted are accepted in the recycling bin. If possible, it's best to put them all in the same bag before disposing of them in the bin.

Bags made of rigid or double-surfaced plastic must not be placed in the recycling bin.

YES



NO

